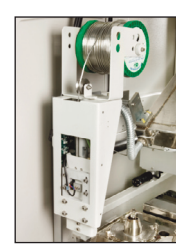
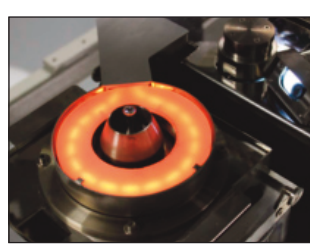
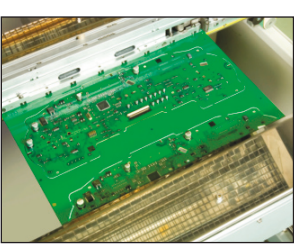




Pillarhouse
INTERNATIONAL

ORISSA SYNCHRODEX

Flexible, in-line, modular selective soldering system



ORISSA SYNCHRODEX



Flexible, in-line, modular selective soldering system



Designed as a modular system, the SynchroDEX range of in-line equipment offers the ultimate in flexibility with the ability to upgrade to high-speed throughput when multiple modules are placed together.

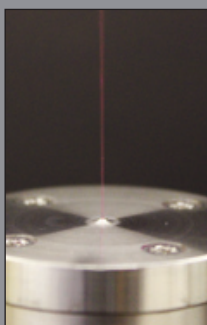
Supplied as standard with our patented design Drop-Jet fluxer, this system offers accurate, controlled flux deposition either prior to or during the optional top side pre-heat function. Pre-heat can be controlled via an optional top side closed-loop pyrometer system for optimum temperature profile regulation.

Our low maintenance solder bath and pump mechanism moves in three axes. Solder is applied using our proven technology - single point AP nozzle design - incorporating patented spiral solder return-to-bath technology, offering increased wave stability with reduced potential for solder balls. The system can also accommodate our latest generation Micro Nozzle, together with Jet-Wave, Wide-Wave and dedicated multi-tube single dip solder technology.

As with all Pillarhouse systems, the soldering process is enhanced by a hot Nitrogen curtain which provides an inert atmosphere for the soldering process and assists in the prevention of oxidisation. This process provides a local pre-heat to the joint, thus reducing thermal shock to localised components.



JET-TIP NOZZLE



DROP-JET
FLUX HEAD



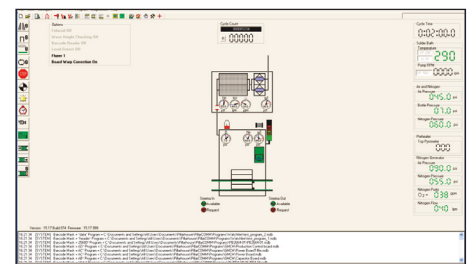
150MM WAVE NOZZLE



Pillarhouse
INTERNATIONAL



TOP SIDE PRE-HEAT OPTION



OPERATION

The SynchroDEX is controlled by a PC through PillarCOMM, a Windows® based 'Point & Click' interface with PCB image display, as illustrated above. Additionally, our PillarPAD offline package allows the operator to produce programs independently from the machine using Gerber data.



PILLARGEN 80
Nitrogen generation system



Pillarhouse
INTERNATIONAL

STANDARD FEATURES

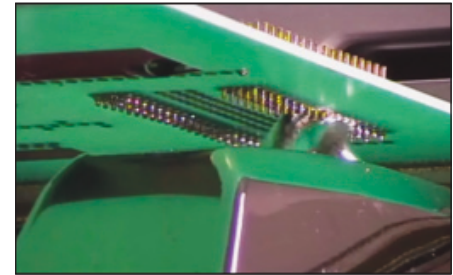
- In-Line Motor Driven Auto Width Adjust Throughfeed Synchronous Movement Conveyor
- Conveyor Side Clamping
- Integral PC & Machine Mounted TFT Monitor
- Auto Motorised Solder Wire Feed & Level Detect
- Heated Inerted Nitrogen System
- Drop-Jet Fluxer
- Set of AP Solder Nozzle Tips
- Internal Fume Extraction
- Solder Wave Height Measurement & Correction System
- Colour Programming Camera
- Light Stack Tower
- Windows® based PillarCOMMX 'Point & Click' interface
- PillarPAD Offline Programming System
- Auto Fiducial Recognition & Correction System
- Flux Level Sensor
- Multilevel Password Protection
- SMEMA Compatible
- Process Viewing Camera with Record Feature
- Lead-Free Solder Capability
- Day-To-Day Service Kit

MONITORING OPTIONS

- Flux Presence Sensor - Thermistor Style
- Flux Spray and/or Flow
- Pump RPM
- O₂ PPM
- Nitrogen Flow

OPTIONS

- Ultrasonic Fluxing
- Dual Drop-Jet/Ultrasonic Fluxing
- Top Side Instant IR Pre-Heat
- Closed-Loop Pyrometer Temperature Control
- Bottom Side Hot Nitrogen Selective Pre-Heat
- Laser PCB Warp Correction
- Solder Reel Identification
- Solder Bath Coding (identifies correct bath for program)
- Encoders on X, Y and Z Axis
- Nitrogen Generator



JET-WAVE SOLDER NOZZLE



TWIN FIXED PITCH
AP SOLDER NOZZLE



ADDITIONAL SYSTEM OPTION - PillarCARE
Pillarhouse's comprehensive after-sale service and process programme, available for all machines



Pillarhouse... Expect innovation
www.pillarhouse.co.uk

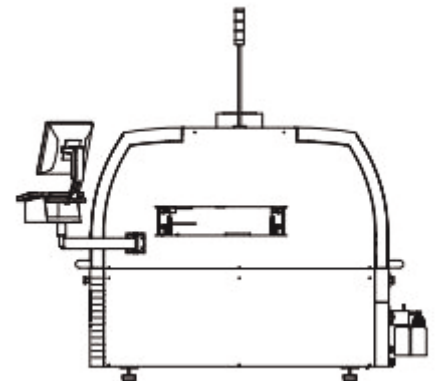
ORISSA SYNCHRODEX



Pillarhouse
INTERNATIONAL

SPECIFICATIONS

Height:	1615mm / 63" - excluding light stack
Width:	813mm / 32"
Depth:	2024mm / 80"
Board size:	Max. - 457mm x 610mm / 18"x 24" Min. - 102mm x 102mm / 4"x 4"
Edge clearance:	Above/below 3mm
Height clearance:	Below 40mm - above 45mm 100mm - upon request
Extraction:	Fan: 276mm dia.
Rating:	1000m ³ /hr / 589 CFM
Solder:	Most commonly used solder types - including lead-free
Solder pot capacity:	15kg standard - 25kg large bath
Applicators:	AP style - 2.5 - 16mm dia. Extended and Jet-Tip nozzles - up to 25mm dia. Jet-Wave nozzles - up to 25mm width 150mm Wave nozzle
Flux:	Low maintenance Drop-Jet system. Low solids (below 8%), no clean flux, pressurised and inerted system, optional water-soluble system available
Flux tank capacity:	1 litre
Fluxer speed:	50 dots/second
Deposition size:	4.0-6.0mm / 0.16-0.24"
X, Y & Z axis resolution:	0.15mm
Repeatability:	+/- 0.05mm
Nitrogen supply pressure:	5 bar / 72 psi
Nitrogen usage:	30-100 litres/min. - solder nozzle configuration dependent
Nitrogen purity:	99.995% or better
Air supply pressure:	5 bar / 72 psi
Air usage:	10 litres/min. / 0.35 CFM
Power Supplies:	Single phase + PE
Voltage:	230V
Frequency:	50/60Hz
Power:	Max. power is machine configuration dependent
Transport:	Conveyor
Programming:	PillarCOMMX Windows® based 'Point & Click' interface



Pillarhouse International Ltd.

Rodney Way, Widford, Chelmsford, Essex CM1 3BY UK

Pillarhouse USA, Inc.

201 Lively Blvd, Elk Grove Village, IL 60007 USA

Pillarhouse (Suzhou) Soldering Systems Co., Ltd.

105 Weixi Road, Suzhou Industrial Park, China 215127

www.pillarhouse.co.uk

Tel: +44 (0) 1245 491333 Email: sales@pillarhouse.co.uk

www.pillarhouseusa.com

Tel: +1 847 593 9080 Email: sales@pillarhouseusa.com

www.pillarhouse.cn

Tel: +86 512 6586 0460 Email: sales@pillarhouse.cn